

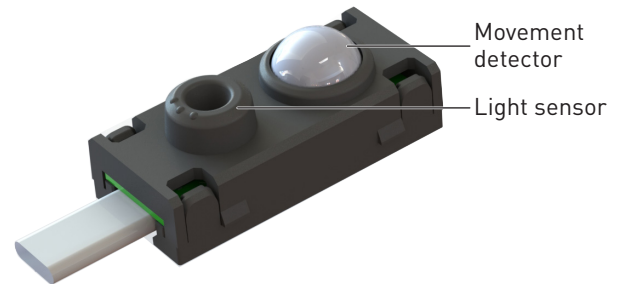
# Active+ Sense (3020) Datasheet

The Active+ Sense is a small luminaire-based sensor that combines a photocell for constant light control and a passive infrared presence detector.

This standalone unit is to be used with Helvar's Active+ range of intelligent lamp control gear.

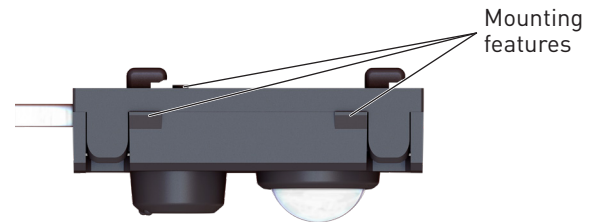
The Active+ Sense is attached to a flexible connection cable terminated with a keyed connector that plugs into an Active+ control gear. The cable can exit the sensor either in line with the enclosure (side exit) or perpendicular to it (bottom exit).

If the sensor is connected to non-SELV control gear, the luminaire must be Class I.

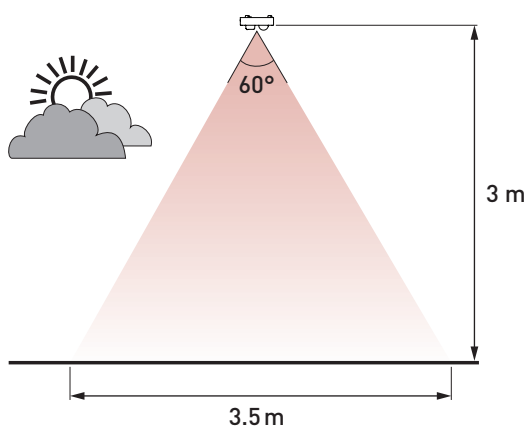


## Key Features

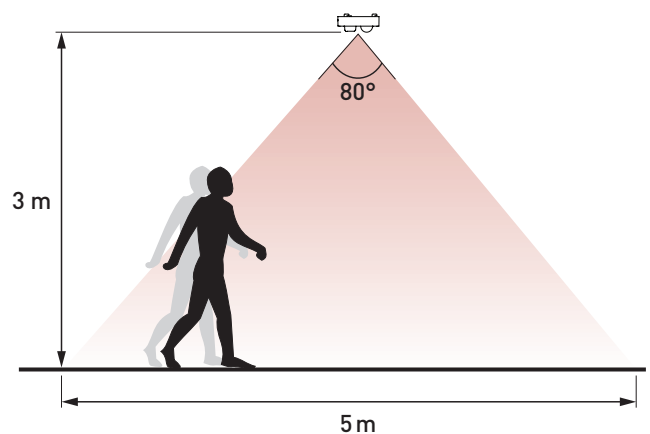
- Small and inconspicuous, it does not change the appearance of the luminaire.
- Provided with mounting features that can be snapped into sheet metal: two on each long side, and two on the rear.
- Part of the Active+ range of products from Helvar, which provide simple, out-of-box energy saving functionality.



**Constant Light Coverage**



**Presence Detection Coverage**



## Technical Data

### Connections

**Active Ahead/  
Active+:** 80 cm flexible cable terminated with a four-way, 2 mm keyed connector  
Note: If the sensor is connected to non-SELV control gear, the luminaire must be Class I.

### Mechanical data

**Dimensions:** 32.4 mm × 15.5 mm × 14.5 mm  
**Material (casing):** Fire-retardant PC/ABS blend  
**Colour:** Grey (RAL 7016): Order code T3020  
 White (RAL 9003): Order code T302001  
**IP code:** IP30  
**Weight:** 22 g

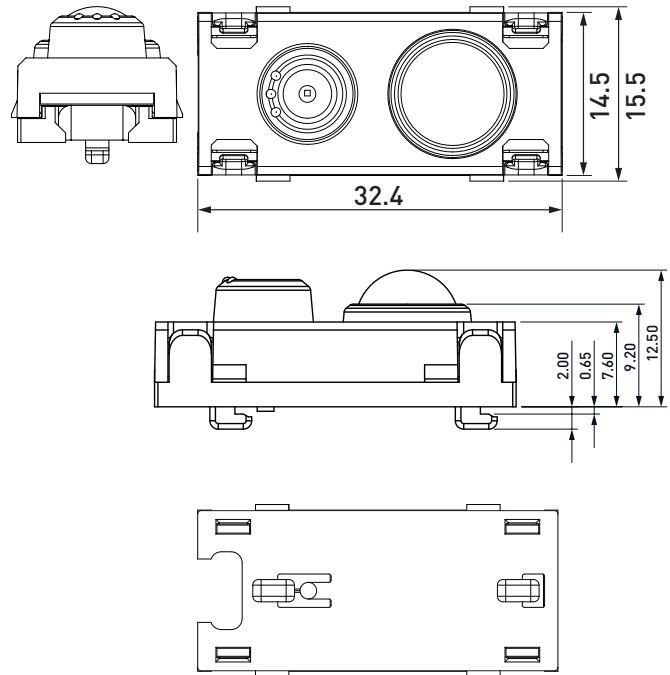
### Operating conditions

**Ambient temperature:** -20 °C to +50 °C  
 Note: The temperature difference between the detection target and the background must be at least 4 °C.  
**Relative humidity:** Max. 85 %, noncondensing  
**Storage temperature:** -20 °C to +70 °C  
**Illuminance:** 5 lx to 5000 lx

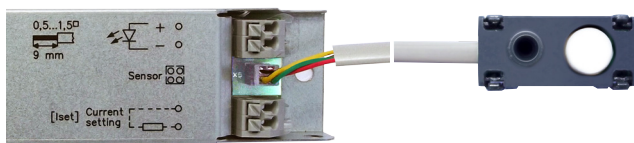
### Conformity and standards

**EMC emission:** EN 55015  
**EMC immunity:** EN 61547  
**Safety:** EN 61347-2-11  
**Environment:** Complies with RoHS directive.

### Dimensions (mm)



### Connection



### Mounting

